

1 Network community trends in fish and livestock
2 trading networks – Online supplementary
3 information

4 Darren Michael Green^{a*}, Marleen Werkman^a,
Lorna Ann Munro^b, Rowland Raymond Kao^c,
István Zoltán Kiss^d & Leon Danon^{e,f}

5 June 22, 2010

6 ^a *Institute of Aquaculture, University of Stirling, Stirling, Stirlingshire FK9 4LA,*
7 *UK.*

8 ^b *Marine Scotland Marine Laboratory, PO Box 101, 375 Victoria Road, Aberdeen,*
9 *AB11 9DB, UK.*

10 ^c *Institute of Comparative Medicine, Faculty of Veterinary Medicine, University*
11 *of Glasgow, Glasgow, G61 1QH, UK*

12 ^d *Department of Mathematics, University of Sussex, Falmer, Brighton BN1 9RF,*
13 *UK.*

14 ^e *Mathematics Institute, University of Warwick, Gibbet Hill Road, Coventry*
15 *CV4 7AL, UK.*

16 ^f *Department of Epidemiology, Harvard School of Public Health, 677*
17 *Huntington Avenue, Boston 02115, USA.*

18 * *Author for correspondence. email: darren.green@stir.ac.uk*

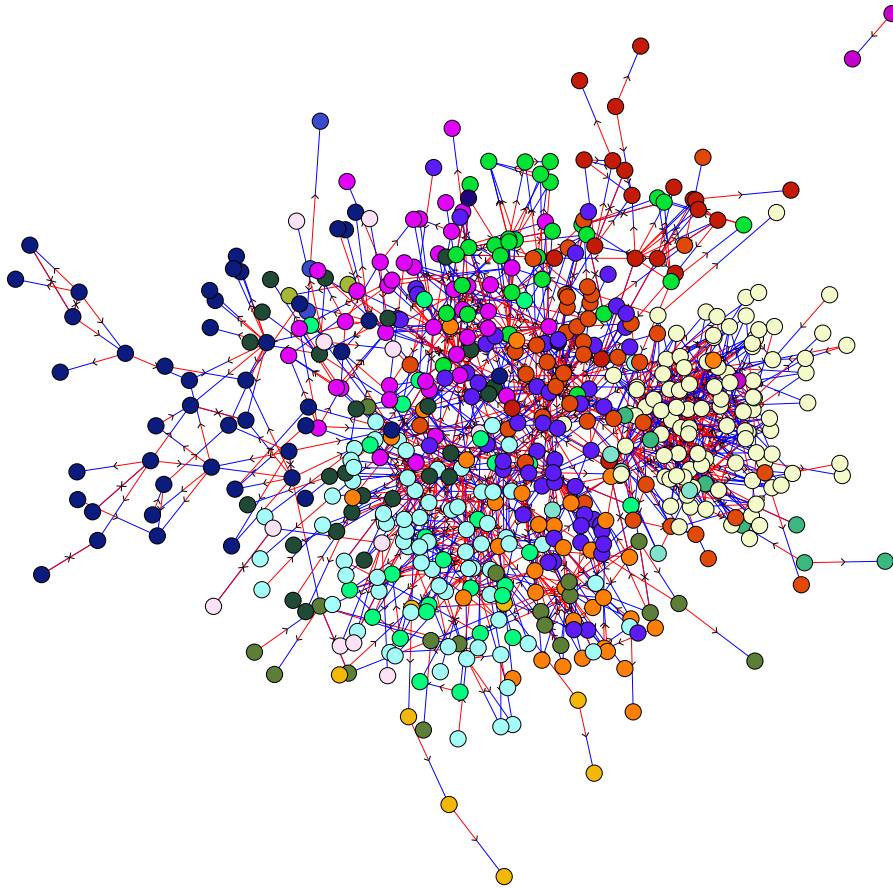


Figure 1: Best-fit community assignments for the live fish movement network for Scotland (salmonids) from 2002-4. Arrows indicate direction of connection (sometimes bidirectional).

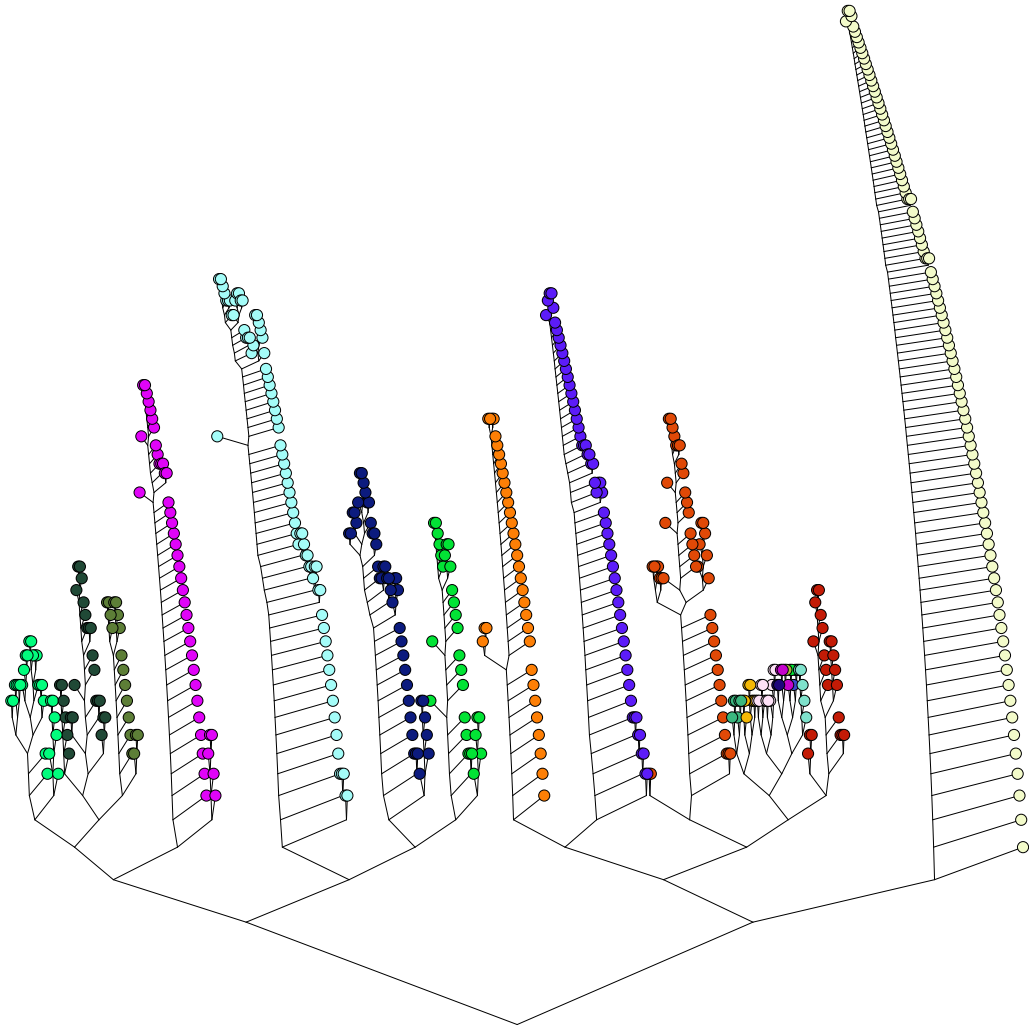


Figure 2: Joining-tree for the best-fit community assignments for the live fish movement network for Scotland (salmonids) from 2002-4. Each junction on the tree represents a merger between two communities during the algorithm. Best-fit community assignments are coloured as in Figure 1.

Figure 3: Related AVI movie file **livestock_comms.avi**: Best-fit community assignments for the large livestock movement network for Great Britain from 2003-4, divided into four-week periods. Nodes (sites) sharing the same community label are indicated by the same colour.